



InteleViewer Installation and Setup

InteleViewer Installation and Setup

These instructions will assist with downloading, installing and setup of InteleViewer.

InteleViewer for Windows will run on Windows x86 XP, Vista or Win 7 desktop computers. For clients using Windows Terminal Services, there is a registry modification required. InteleViewer for MAC will run on Mac OS Snow Leopard 10.6 or higher only.

Please check first before proceeding that InteleViewer not already installed. This can be checked by looking on the Desktop for an InteleViewer Icon or looking for the Intelera Medical Systems folder in the Programs list on a windows machine or Applications within a mac. If InteleViewer is already installed, please proceed directly to the "Edit Bookmarks" step.

Download

To download the InteleViewer install file go to our web site www.ncrg.com.au and click on Referrer Support / Software Downloads or click on one of these links:

[IV 32-bit Windows Installer](#) [IV 64-bit Windows Installer](#) [IV Mac OS X Installer](#)

It will download to the 'downloads' location on your computer and may take a few minutes depending on your network speed.

Installation

Double click on the InteleViewer application you have downloaded to begin installation.

During installation;

- accept** terms and conditions (License Agreement),
- accept** default folder (next),
- enable** for all users (next),
- disable** dicom service (finish)

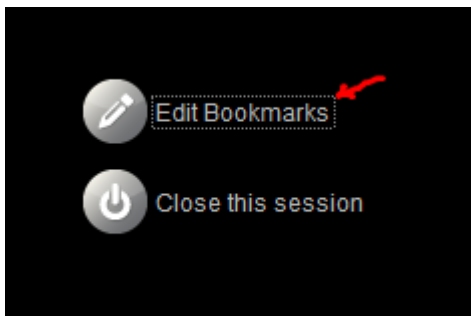
If installing a MAC version, please be aware that you may need to change your system preferences security settings or it may not install correctly.

Edit Bookmarks

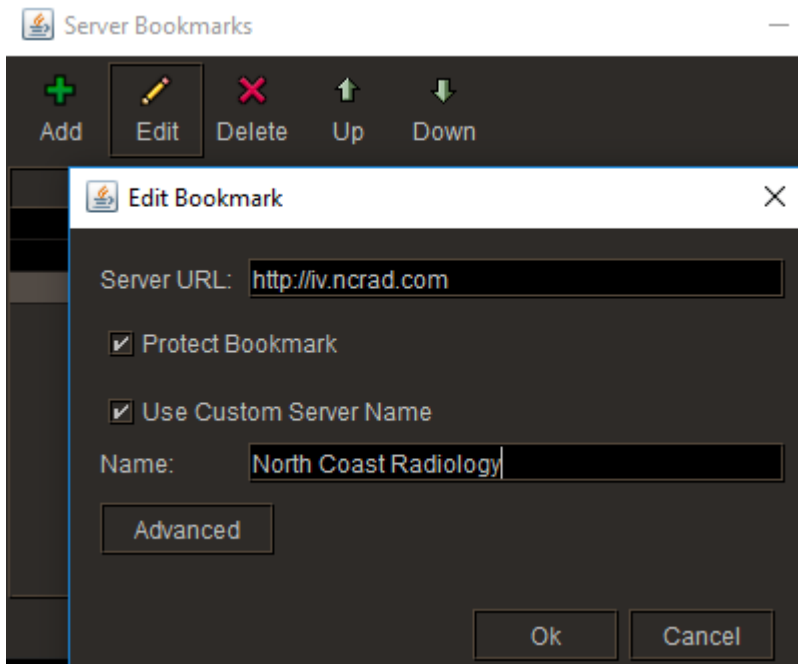
To access our database, you will need to add a bookmark.

The first time you will get a message saying that “You do not have any Bookmarks...” and you will be asked to “Enter a New Server” or URL.

Open IntelViewer and click on Edit Bookmarks.



Click on “Add” and complete as per shown here. URL is <https://iv.ncrad.com> and Name can be anything you like so if in Sydney could be for example Chatswood Ryde Radiology.





InteleViewer Installation and Setup

Log In

If you do not have a username and password, please [click here](#) then select “Request user account for online access”.

Help

There is detailed help available from with the Help menu from InteleViewer. The InteleViewer user guide is quite detailed.

If you require further help, please go to the [Contact Us](#) web page, select “Referrer” then “Report a Downloads Support or Technical Problem”.